

# STRIAE CATCHER

LSC-5000A



## Feature

- It can do the stable observation for long time since the high-intensity blue LED is adopted as light source.
- The brightness volume gives way to the adjustment of brightness by each sample's transmittance
- Large view area sized  $\phi 45\text{mm}$
- HDMI terminal allows to display the high quality image on the monitor without PC.
- Observation image is saved by connecting USB cable with the PC
- It is available transversely by dismounting the main body from the stage.

## Apprication

- This product is suitable to inspect the optical nonuniformity like a striae, foreign object and bable.

## Target

- Crystal plate
  - Glass filter
  - Optical lens
- \* Not flat object requires to be soaked in immersion liquid which have the same index as object.

Main body specification	
Principle	Shadow graph
Visual field	About $\phi 45\text{mm}$
Light source	Blue LED Wavelength 450~465nm (changeable into other wavelength by request)
Light control	Volume
Power source	AC 100-240V 50/60Hz
Power consumption	Less than 25W
Usage environment	Temperature:10~35°C Humidity:20~80% (Non condensing)
Dimension	W400 x D400 x H1210
Weight	40kg

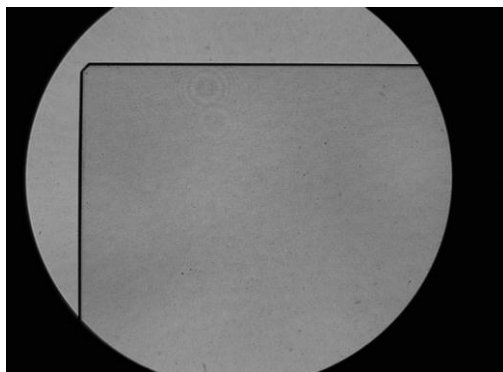
Area camera specification	
Output	HDMI Ver1.2 ( ※1 USB2.0 )
Effective pixels	1392x1040 (SXGA+)
Pixel size	4.65x4.65 $\mu\text{m}$
Viewer software ※1	Free software supplied with camera

※1 Using the software requires to connect main body to PC by USB cable.

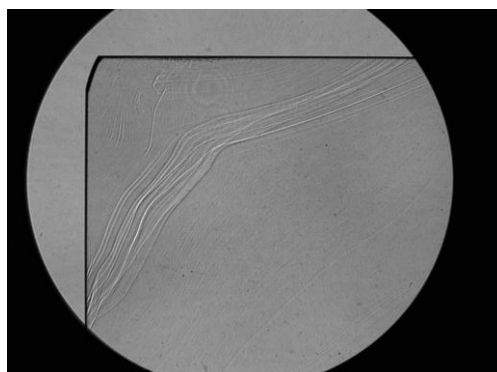
Monitor (Option ※2)	
Input signal	HDMI terminal
Power source	AC 100-240V 50/60Hz 1.8A
Monitor size	22 inches wide (1680x1050)
Weight	5kg

※2 Monitor and Table for monitor are options.

Good item



Defective



There is a possibility that the specification and deisgn will be changed without notice.